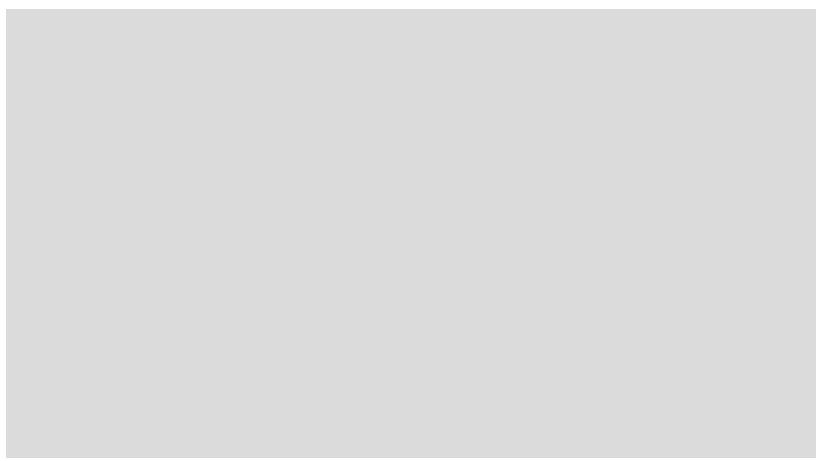
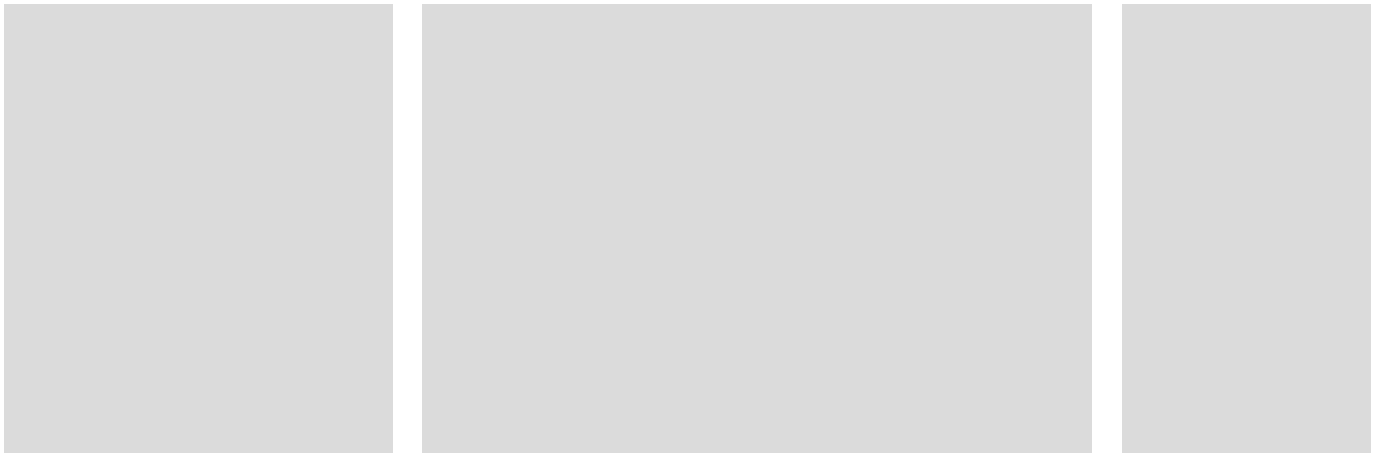




Internationale Konzepte
International concepts from StoDesign



Druck und Bildschirm können Farben verfälschen!
**Colours are not necessarily displayed correctly on print
and screen!**



Creating designs using **colour and texture** is our field of expertise. Know-how and experience provide the essential foundation for the implementation of complex design processes. **Design concepts** establish identity. They enhance or maintain the value of buildings and contribute towards improving the quality of life and home living. Therefore the quality of **visualisation and sampling** of colour and surface ideas also plays a major role for us.

We would be glad to share our experience in international project work with you during **seminars and presentations**.

*Die **Gestaltung mit Farbe und Textur** ist unsere Kompetenz. Know-How und Erfahrung sind die Grundlagen für die Umsetzung komplexer Entwurfsprozesse.*

***Gestaltungskonzepte** schaffen Identität. Sie steigern oder erhalten Werte und tragen zu einer Verbesserung der Wohn- und Lebensqualität bei.*

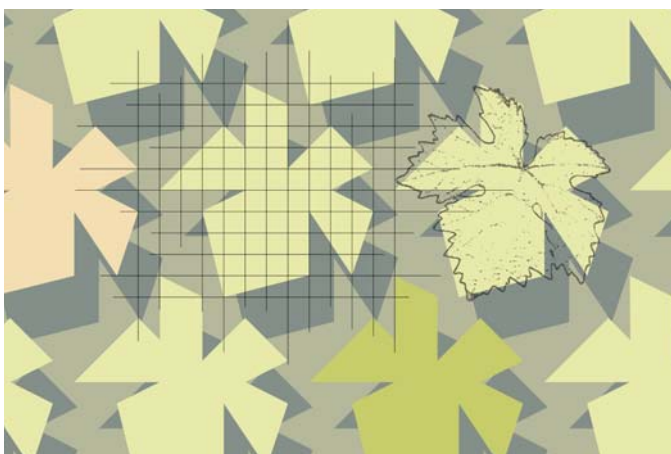
*So spielen für uns im Vorfeld auch die Qualität der **Visualisierung und Bemusterung** von Farb- und Oberflächenideen eine wichtige Rolle.*

*Gerne geben wir unsere Erfahrungen aus internationaler Projektarbeit durch **Seminare und Vorträge** weiter.*

Residential development Bratislava, SK



StoDesign



project no. SAP/CRM:

10229680

customer:

Bratislavský výškový servis s.r.o.
82107 Bratislava, Slovakia

dominant colours:

Sto 36422, Sto 32120

more design concepts
for download:

www.sto.com

Torres de Sedes Gijon, ES



StoDesign



project no. SAP/CRM:

10229681

customer:

Jorge Noval. Estudio de Arquitectura
Gijon / ES

dominant colours:

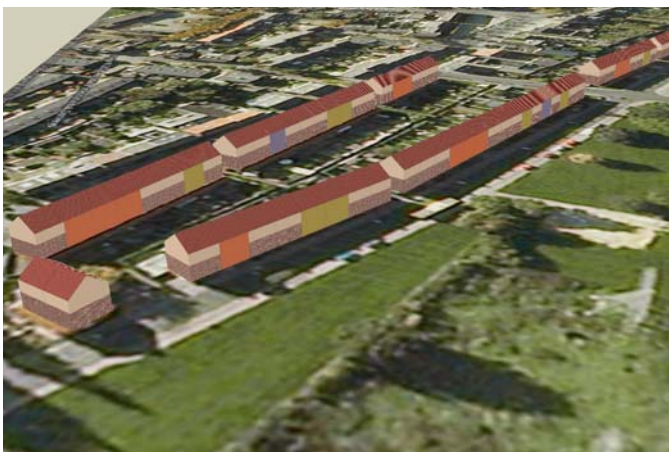
Sto 10DC710, Sto DC1073M
Sto 32441, Sto 32240, Sto 31441

more design concepts
for download:

www.sto.com



Balijeweg Maastricht, NL



project no. SAP/CRM: 10180955
client: Servatius Woningstichting
6217 Maastricht, NL
dominant colours: Sto 32221, Sto 32340, Sto 31242,
Sto 34110, existing brick
more design concepts
for download: www.sto.com



9 Bukit Utama, 41 Storey Condominium Petaling Jaya, MY



project no. SAP/CRM:

client:

dominant colours:

more design concepts
for download:

10214558

First Nationwide Development
Petaling Jaya / Malaysia

Sto 31336, Sto 35420, Sto 20409,
Sto 33332

www.sto.com



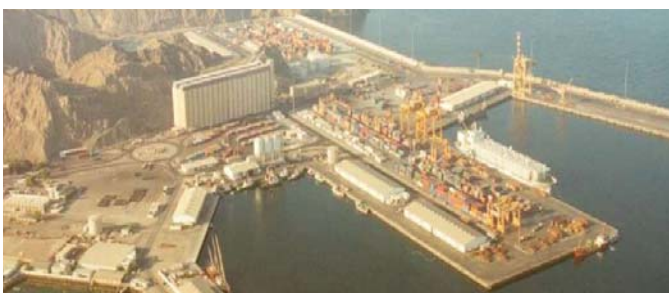
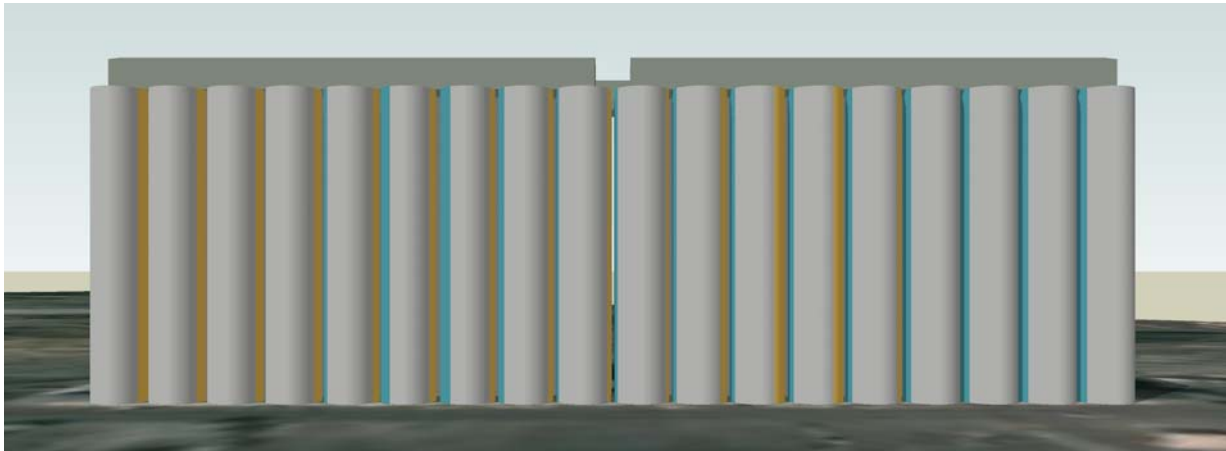
Edificio de vivienda San Martín 2 Salinas (Castrillón), ES



project no. SAP/CRM: 10235559
customer: SYPSA
Avilés-Asturias, ES
dominant colours: Sto 10DC140, Sto 32242
Sto 36132, Sto 31335, Sto 35405
more design concepts
for download: www.sto.com



Silos in Ruwi Muskat, OM



project no. SAP/CRM: 10227270
customer: Oman Flour Mills Co.
Ruwi, Muskat, Sultanate of Oman
dominant colours: Sto 37108, Sto 32121, Sto 31320
more design concepts
for download: www.sto.com

Rehabilitación fachadas Bilbao, ES



project no. SAP/CRM: 10223066
customer: Javier Idirin
Bilbao / Spain
dominant colours: Sto 32520, Sto 32565
Sto 36433, Sto 32121
more design concepts
for download: www.sto.com

Grochowska Str. 287-299
Warsaw, PL



StoDesign



project no. SAP/CRM: 10214006
customer: City Council
Owner Community
Warsaw / Poland
dominant colours: Sto 31110, Sto 10421, Sto 32110,
Sto 31335, Sto 31421, Sto 33210,
Sto 32234
more design concepts
for download: www.sto.com



Residential housing, general concept Września, PL



project no. SAP/CRM: 10216355
customer: Wrzeńska Spółdzielnia
Mieszkaniowa
Września / Poland
dominant colours: Sto 32234, Sto 32134, Sto 31422,
Sto 36133, Sto 31336, Sto 33135
more design concepts
for download: www.sto.com



Residential building, Bebravská 2-4 Bratislava, SK



project no. SAP/CRM: 10227272
customer: Bratislavský výškový servis s.r.o.
82107 Bratislava / Slovakia
dominant colours: Sto 32234, Sto 32136, Sto 33133
Sto 31423, Sto 31421, Sto 31311
more design concepts
for download: www.sto.com



Han Huang, Chung Cheng Spring Resort Taipei, TW



project no. SAP/CRM: 10210974
customer: TMA Architects & Associates
Taiwan
dominant colours: Sto 32335, Sto 32138
Sto Superlit 831, stone
more design concepts
for download: www.sto.com

Minami-Ooi 3Chome Tokyo, JP



StoDesign



project no. SAP/CRM: 10237576
customer: Nice Corporation
Yokohama-City
Kanagawa
dominant colours: Sto 31432, Sto 31430,
Sto 31434, Sto 37300, tiles
more design concepts
for download: www.sto.com

Residentie Europacentrum Oostende, BE



StoDesign



project no. SAP/CRM: 10225559
customer: I.B.T.
Wetteren, Belgium
dominant colours: Sto 35440, Sto 35406
more design concepts
for download: www.sto.com



Han Huang Mei Feng, Jhonghe City Taipei County, TW

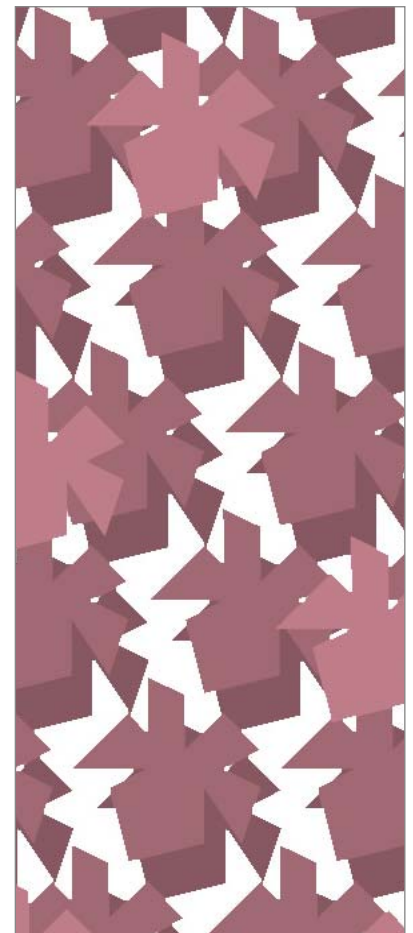
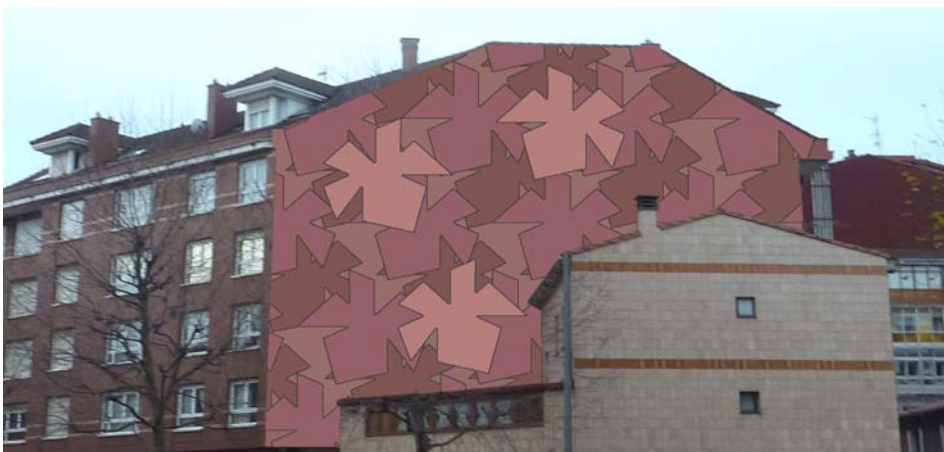
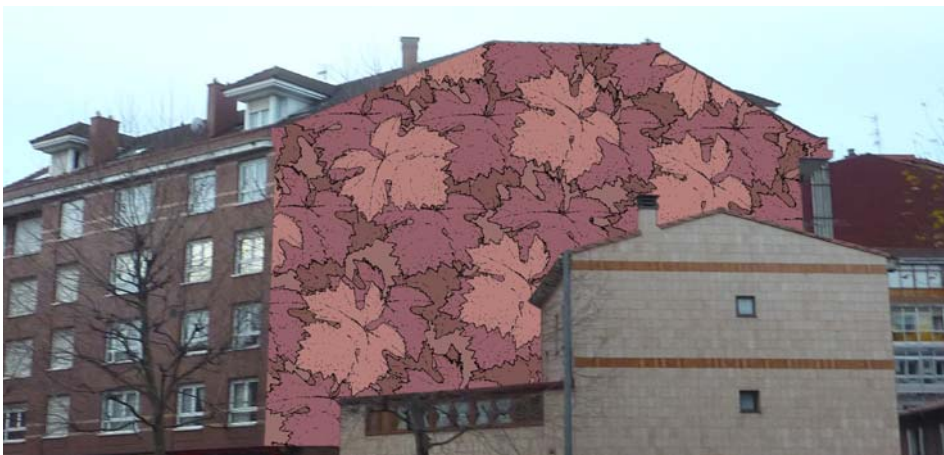


project no. SAP/CRM:
customer:
dominant colours:
more design concepts
for download:

10203439
TMA Architects & Associates
Taiwan
Sto Superlit 831, Sto Superlit 824,
Sto Superlit 821
www.sto.com



Medianera, Principe de Asturias 29 Gijon, ES



project no. SAP/CRN:

10223978

customer:

Esfer Construcciones y Proyectos S.L.
Oviedo, ES

dominant colours:

Sto 34809M, Sto 35132
Sto 33311, Sto 33401, Sto 33330

more design concepts
for download:

www.sto.com

Energy Partnership Nottingham, GB



StoDesign



project no. SAP/CRM: 10236883
customer: Rockwool
London, GB
dominant colours: Sto 32137, Sto 32232,
Sto Brick- Slips
Sto AW15, Sto 31432
more design concepts
for download: www.sto.com



Kotoni Royal Haym apartment building Sapporo/Hokkaido, JP

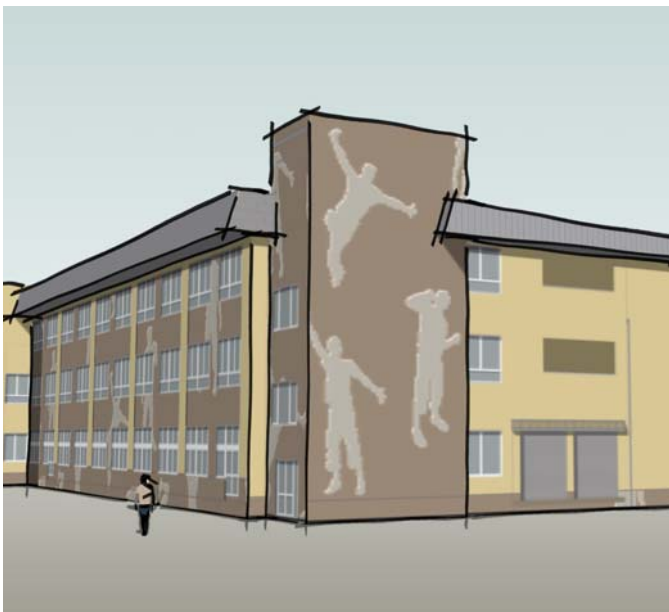
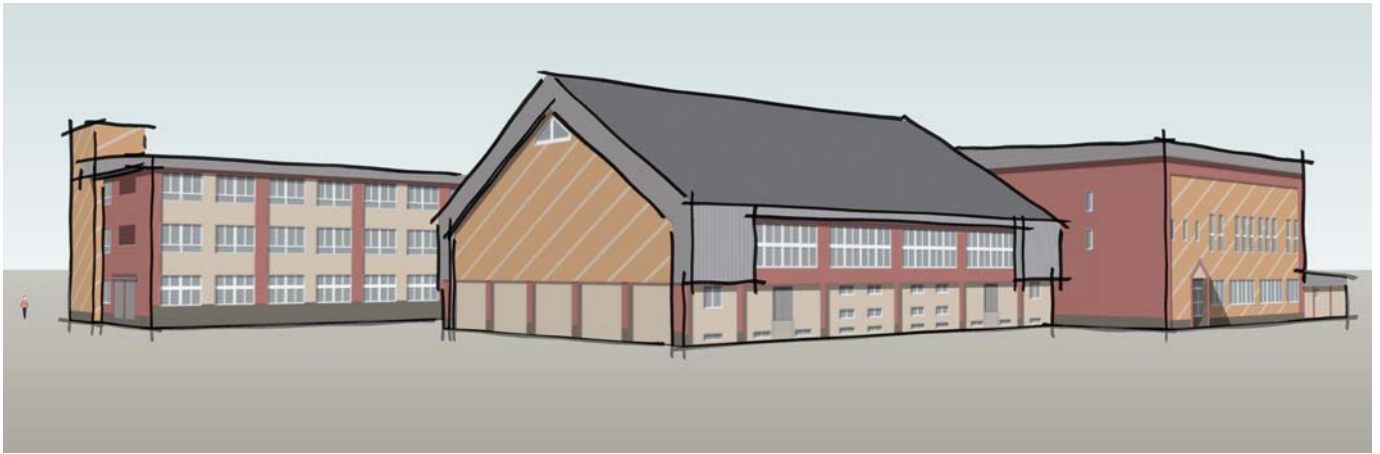


project no. SAP/CRM: 10233615
customer: Kotoni Royal Haym management association
Sapporo/Hokkaido, Japan
dominant colours: Sto 31421, Sto 32130, Sto 32241, Sto 32441, Sto 32243
Sto 35434, RAL 1013, Sto 31331
more design concepts for download: www.sto.com

Shinano-machi school Nagano, JP



StoDesign

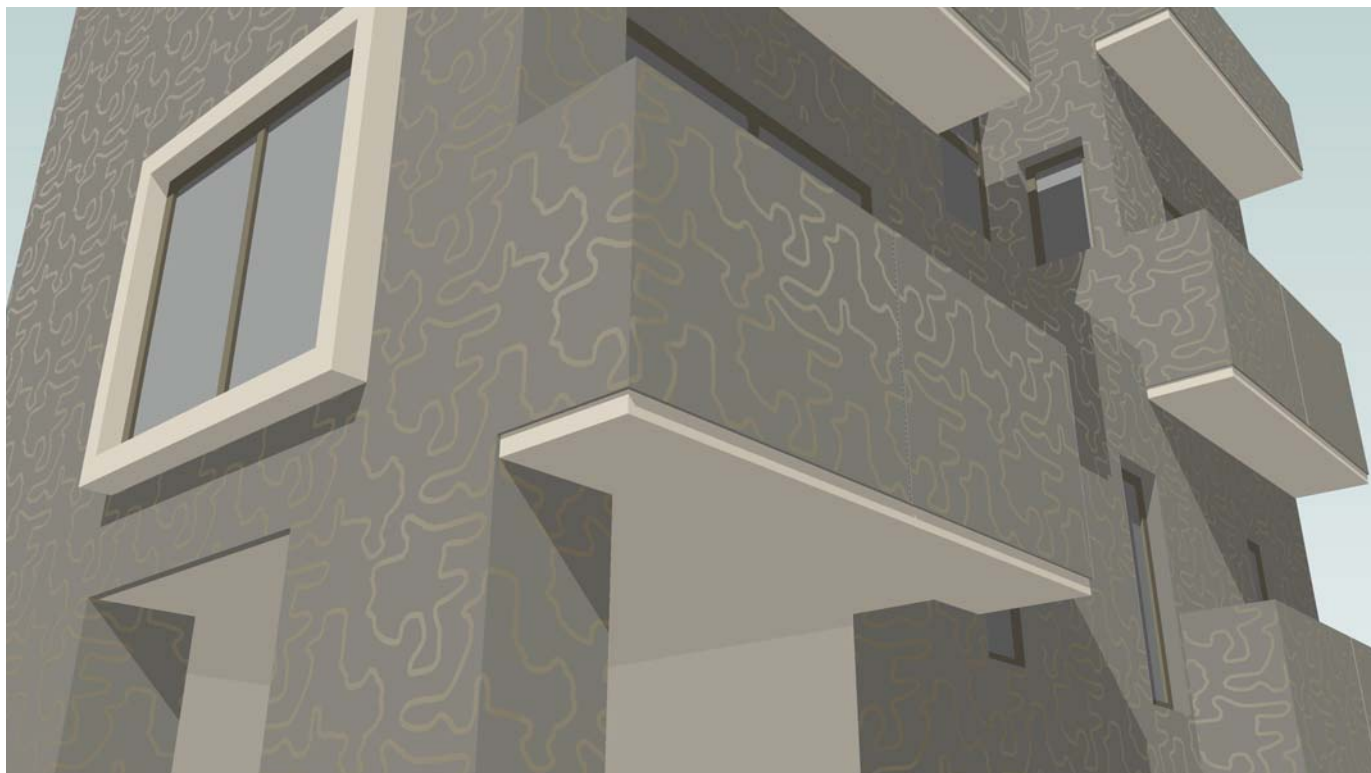


project no. SAP/CRM: 10233689
customer: Shinano-machi local government
Nagano, Japan
dominant colours: Sto 31435, Sto 10603, Sto 33220
Sto 31322, 31432
more design concepts
for download: www.sto.com

Katakura-House Tokyo, JP



StoDesign



project no. SAP/CRM: 10236759
customer: Katakura-san
Tokyo, Japan
dominant colours: Sto 10DC920, Sto 10DC73M
Sto 31336
more design concepts
for download: www.sto.com



Residential Building Priekopy Bratislava, SK



project no. SAP/CRM: 10207318
client: MATEP s.r.o.
83104 Bratislava
dominant colours: Sto 38553, Sto 38507, Sto 35431,
Sto 37107
Sto 38523, Sto 31335, RAL 7030
more design concepts
for download: www.sto.com



10680 Housing Units Tajura, LY



project no. SAP/CRM:	10224416
customer:	Great Socialist Peoples Libyan Arab Jamahiriya
dominant colours:	Sto 31336, Sto 32135, Sto 32133, Sto 34420, Sto 33220, Sto 32420, Sto 36120, Sto 31120, Sto 31420
more design concepts for download:	www.sto.com



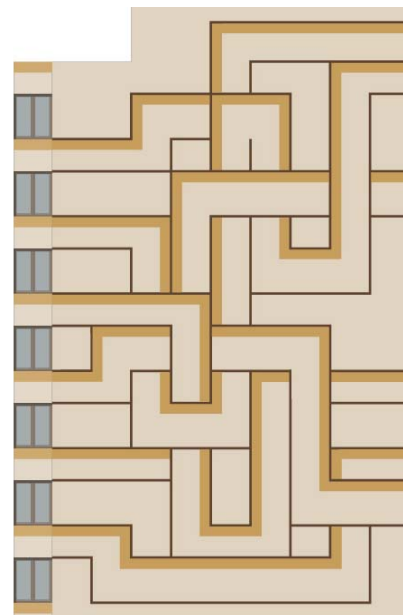
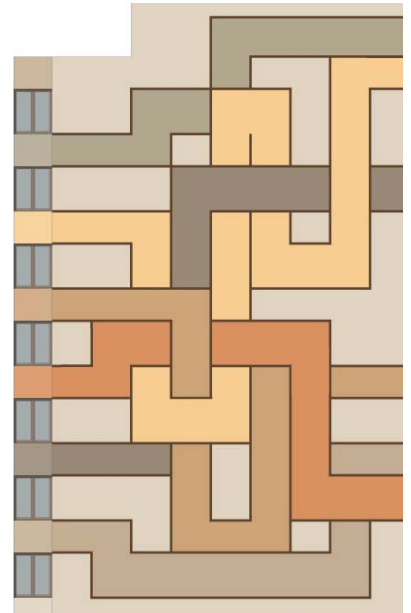
Edificio de vivienda, en c/ Antonio Machado Lugones , ES



projec no. SAP/CRM: 10221208
client: Xort Arquitectura
33400 Aviles / Spain
dominant colours: Sto 32221, Sto 33132, Sto 38507
Sto 31414, Sto 32134, Sto 32331
Sto 31414, Sto 32134, Sto 20918
more design concepts for download: www.sto.com



Graphic design, gable wall Gijon, ES



project no. SAP/CRM:

10216357

client:

Building owners
Gijon / Spain

dominant colours:

Sto 32123, Sto 31233, Sto 32112,
Sto 32120, Sto 32210, Sto 32134,
Sto 31432

more design concepts
for download:

Sto 32123, Sto 32243, Sto 31420

www.sto.com



Residentie Blankenduin Blankenberge, BE



project no. SAP/CRM: 10200777
client: Bodima Aalter
Venecolaan
Aalter / Belgium
dominant colours: Sto 37109, Sto 32240, Sto 32440,
Sto 33300
more design concepts
for download: www.sto.com



Pantai Panorama Condominium Kuala Lumpur, MY

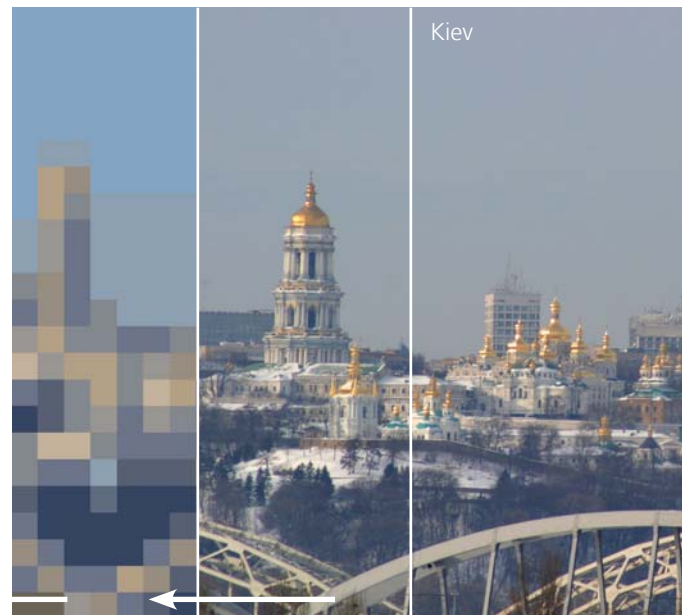


project no. SAP/CRM: 10233942
customer: Pantai Panorama Condominium Management Corporation
Kuala Lumpur, Malaysia
dominant colours: Sto 10DC750, Sto 31434, Sto 32220, Sto 35421
Sto 31335, Sto 32340, Sto 35420, Sto 31242, Sto 34210, Sto 32140
more design concepts for download: www.sto.com

Residential development, Dneprovskaja Kiev, UA



StoDesign

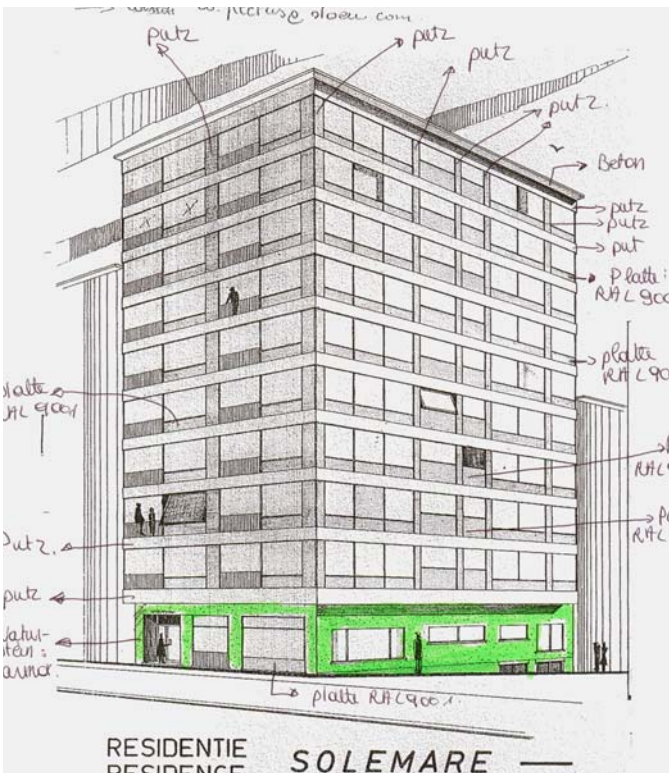
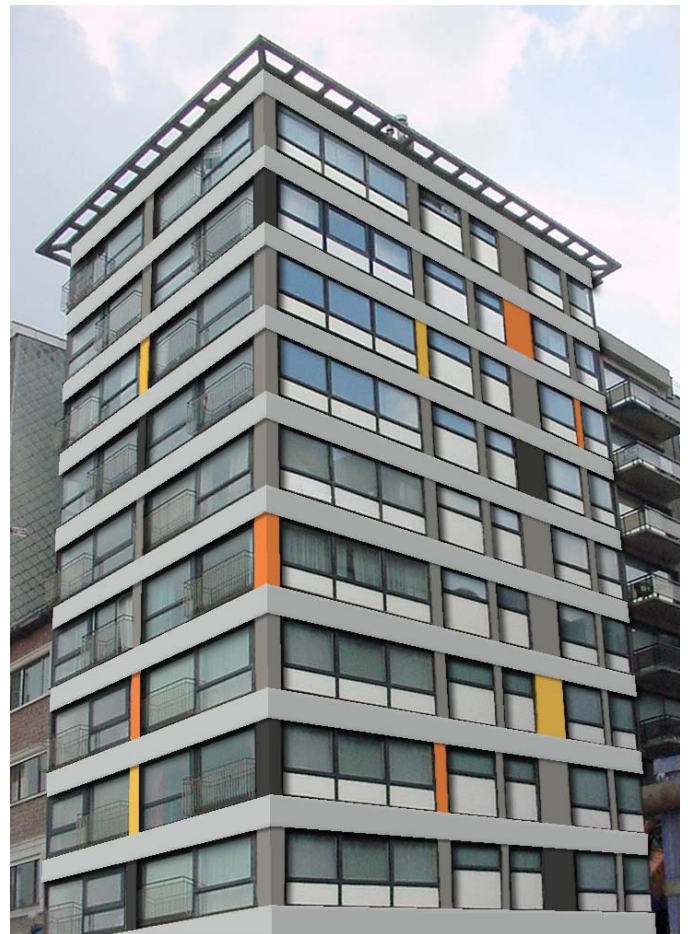


Kiev

project no. SAP/CRM: 10236721
customer: ISPOLIN LTD / Distribution partner
Kiev, Ukraine
dominant colours: Sto 35433, Sto 35421, Sto 31336,
Sto 32122, Sto 37108
more design concepts
for download: www.sto.com



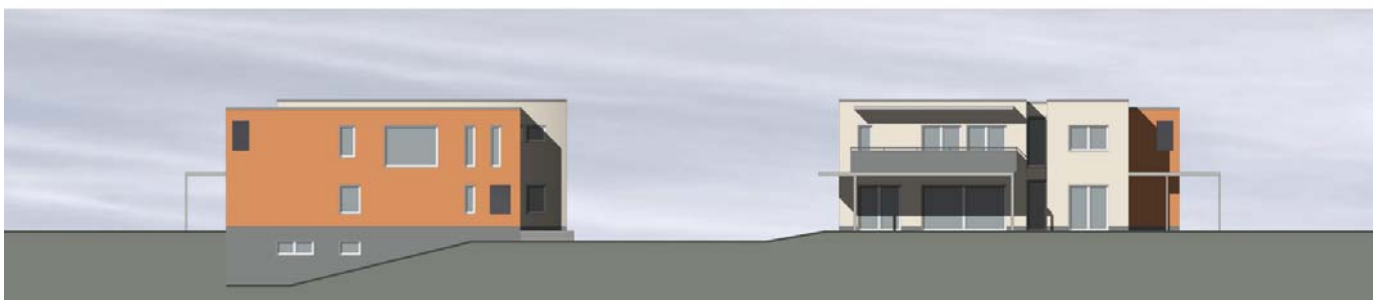
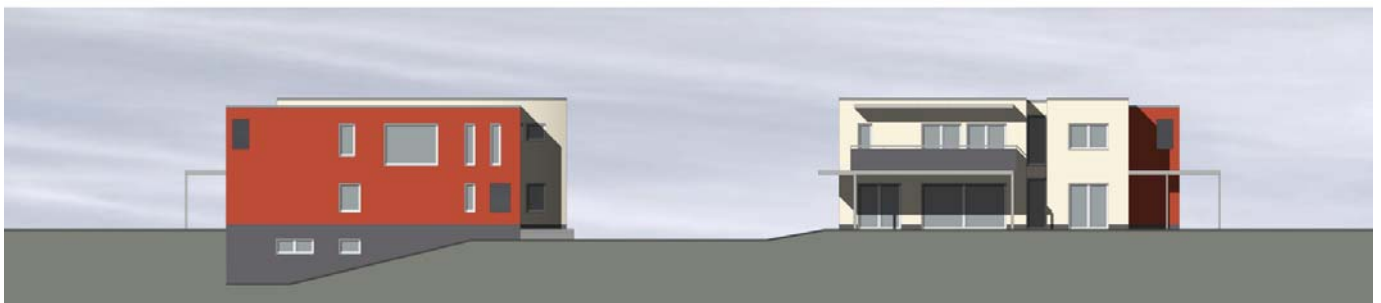
Residentie Solemare Blankenberge, BE



project no. SAP/CRM: 10200129
client: Cherchye Aspect
8300 Leper
Belgium
dominant colours: Sto 32122, Sto 32210
Sto 37109, RAL 7030, Sto 32200,
Sto 31301, Sto 37100
more design concepts
for download: www.sto.com



Los Altos Del Hipodromo, Argentona, s/n Madrid, ES



project no. SAP/CRM:

10205819

client:

CALEDONIAN
28023 Madrid

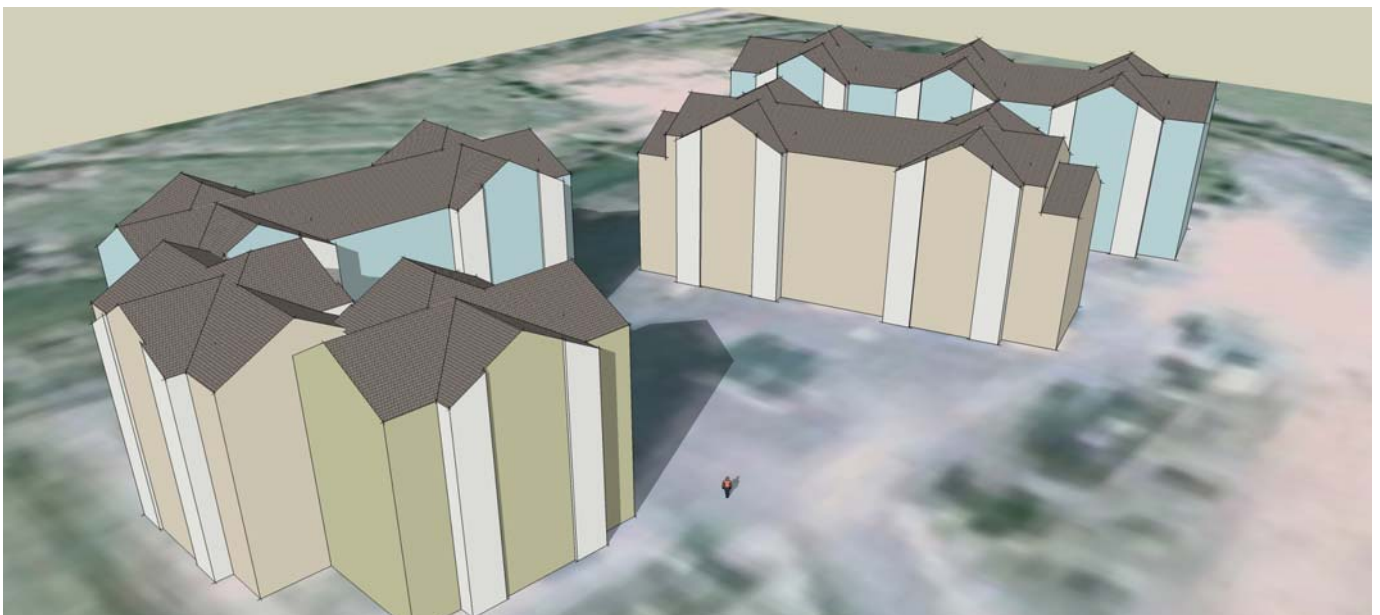
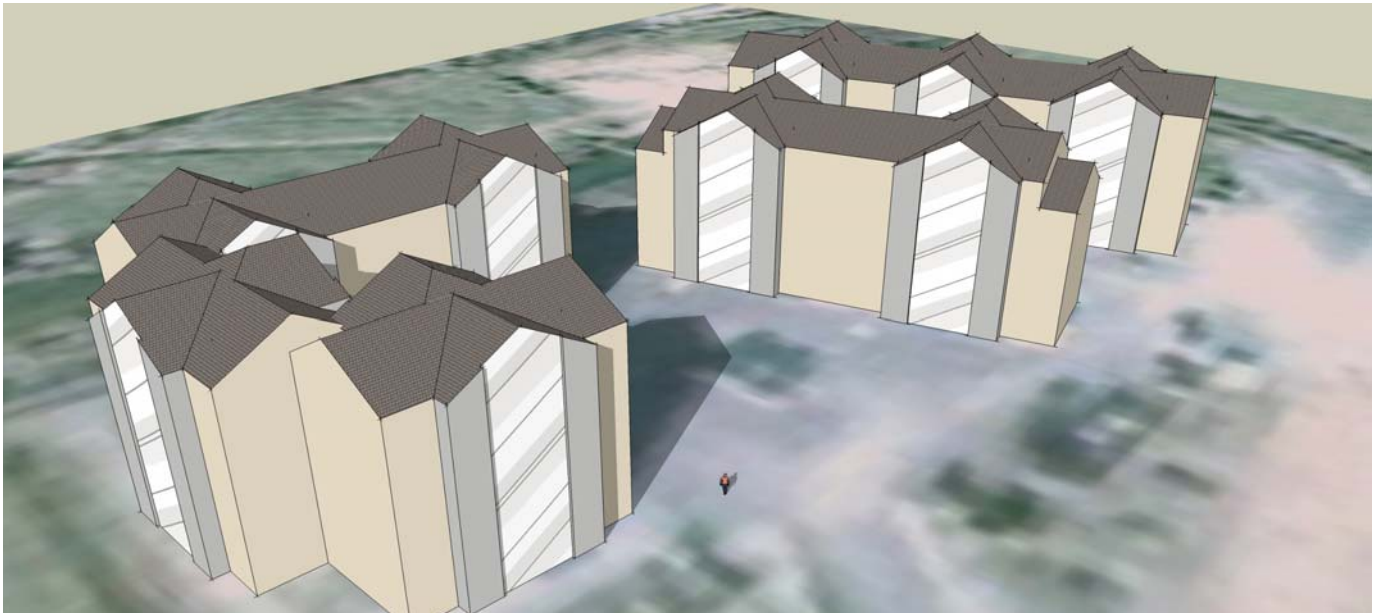
dominant colours:

Sto 31309, Sto 37300, Sto 32440
Sto 31337, Sto 37105, Sto 31422
Sto 32210, NCS S2060-Y70R
www.sto.com

more design concepts
for download:



Residential development „La Capitana“ Luarca, ES



projectnr. SAP/CRM: 10216358
client: Sto Iberica
Mataro / Spain
dominant colours: Sto 37105, Sto 337110, Sto AW 15
Sto 37109
Sto 31235, Sto 36422, Sto 35413
more design concepts
for download: www.sto.com



CASAL D'ARTA, c/ Rafael Blanes, 19 Arta Mallorca, ES



project no. SAP/CRM:

10221538

client:

CASAL D'ARTA
Hans-Peter Escher

dominant colours:

Sto 34334, Sto 34315
Sto 31434, Sto 31432

more design concepts
for download:

www.sto.com

The Glen Regeneration Cork, IE



StoDesign



project no. SAP/CRM: 10156700
client: Cork City Council
Ireland
dominant colours: Sto 33120, Sto 10703, Sto 31423,
Sto 31424, Sto 32120, Sto 32121
more design concepts
for download: www.sto.com

Semi Detached Houses Bandar Tasik Semenyih Selangor, MY



StoDesign



project no. SAP/CRM: 10199273
architect: NRY Architect Sdn Bhd
Kuala Lumpur / Malaysia
dominant colours: Sto 31314, Sto 32121, Sto 32211,
Sto 32233, Sto 31122, Sto 31336
Sto 32123, Sto 36334, Sto 35433,
Sto 31334, Sto 32121, Sto AW 15
more design concepts for download: www.sto.com



Abadi Ria Condominium Taman Desa Kuala Lumpur, MY



project no. SAP/CRM: 10207659
architect: NRY Architects
50400 Kuala Lumpur
dominant colours: Sto 37111, Sto 36312, Sto 33431
Sto 32334, Sto 31138, Superlit 413
Sto 31337, Sto 32121, Sto 31433
more design concepts
for download: www.sto.com

Paradice City, Çekmeköy Istanbul, TR



StoDesign



project no. SAP/CRM:

10205771

client:

Arma AŞ.
and customers
Zincirlikuyu / Istanbul

dominant colours:

Sto 32137, Sto 32131
Sto 31437, RAL 7032, Sto 31332,
Sto 33300

more design concepts
for download:

www.sto.com

Grand Continental Hotel Kuala Lumpur, MY



StoDesign



project no. SAP/CRM: 10211955
client: Grand Central Enterprises Bhd.
Kuala Lumpur / Malaysia
dominant colours: Sto 31424, Sto 31434, Sto 31335,
Sto 32134, RAL 7030, Sto 33430
Sto 31235, Sto 35432, Sto 35430,
Sto 35434, Sto Metallic 37805M
more design concepts
for download: www.sto.com



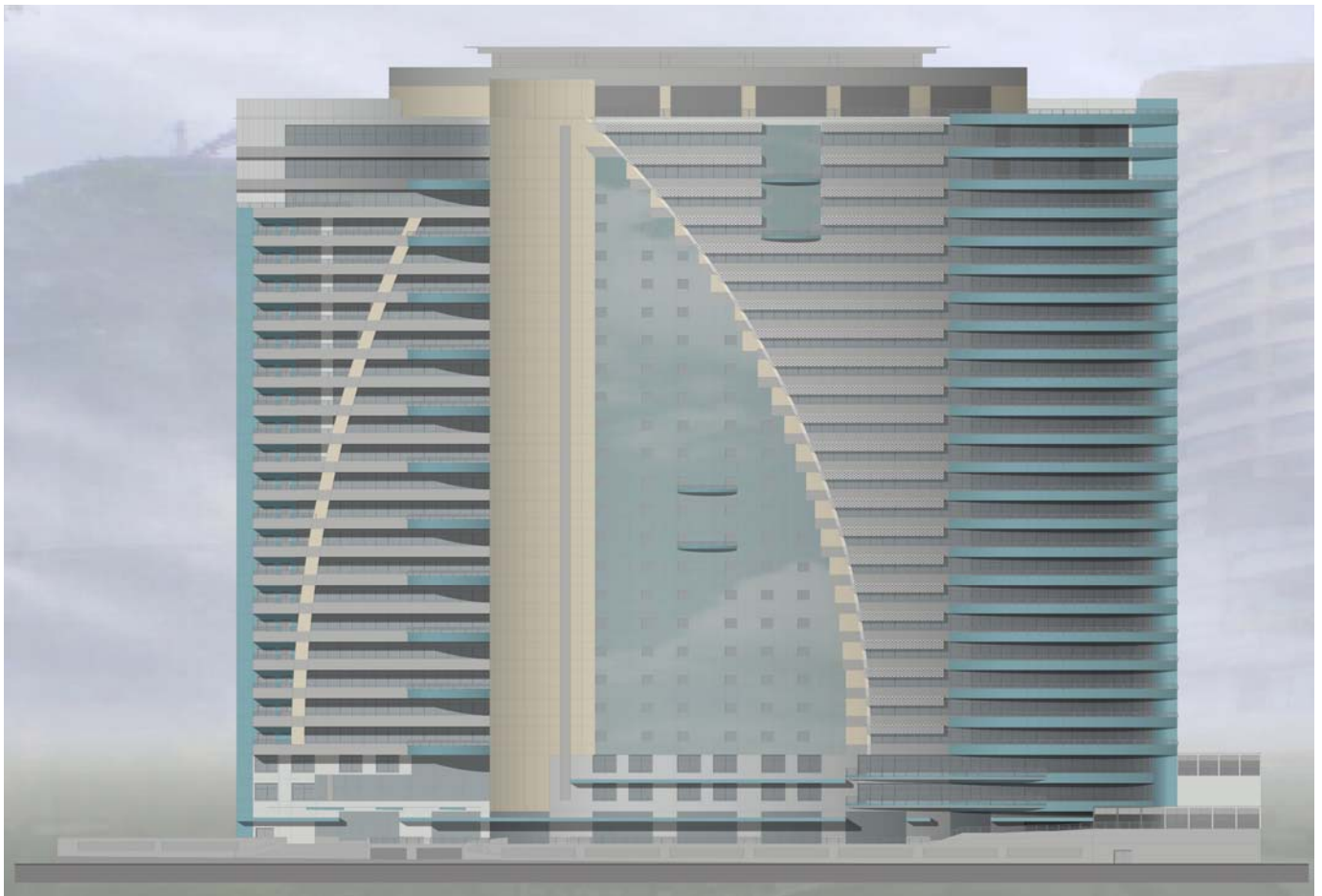
Vista Komanwel Condominium Bukit Jalil Kuala Lumpur, MY



project no. SAP/CRM: 10208311
client: Rotol (M) Sdn Bhd
40150 Shah Alam, Selangor
Malaysia
dominant colours: Sto 31222, Sto 21006, Sto 32220,
Sto 32132
Sto 31424, RAL 7032, Sto 33300,
Sto 32440, Sto 32240
more design concepts
for download: www.sto.com



25 Storey Office Bldn. Bandar Utama Petaling Jaya, MY



project no. SAP/CRM: 10214555
client: First Nationwide Development
Petaling Jaya / Malaysia
dominant colours: Sto 31235, Sto 35421, Sto 37108,
Sto 37110, Sto 37202
more design concepts
for download: www.sto.com

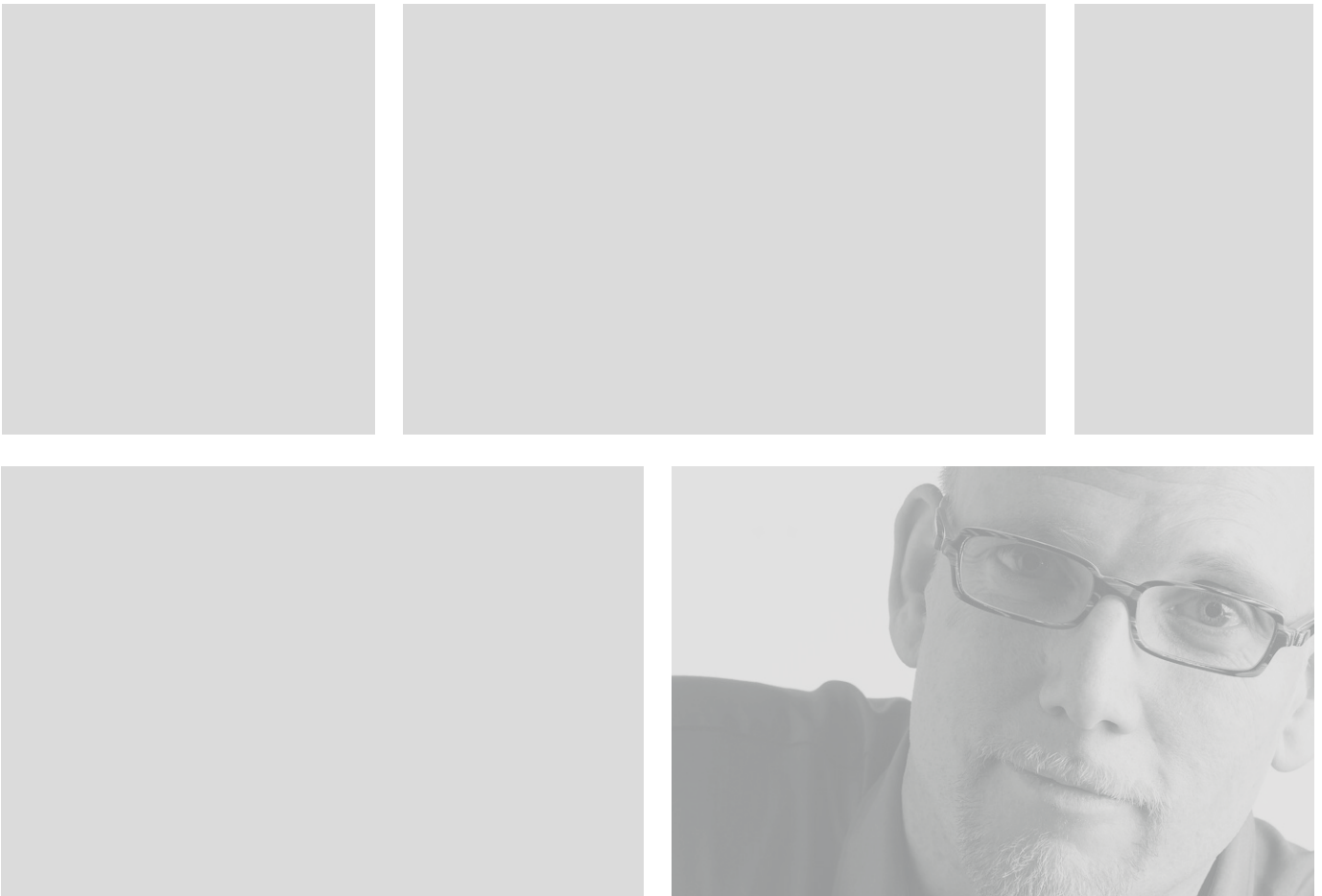
Gushan, Apartment building Kaohsiung City, TW



StoDesign



project no. SAP/CRM: 10210107
client: Hong-Shen Construction Company
Architect: Adam Chen
Taipei / Taiwan
dominant colours: Sto 32134, Sto 31336, Superlit 834,
Sto 32441
Sto 35422, Sto 31336, Sto 31332,
Sto Metallic 37804M
more design concepts
for download: www.sto.com



Fragen oder Anregungen?

Questions or comments? - ma.merkt@stoeu.com